

**Paper 1/s**

Name (print).....
Candidate number .....
Signature .....

*Complete the box above.*

*Answer all questions using the space provided on the question paper.*

*Write in blue or black ink.*

*Maximum possible marks for each question are given in brackets.*

*Take care to write clearly and answer in complete sentences where appropriate.*

*Extra paper is available on request.*

*Write your name on any extra sheet(s) of answer paper you use.*

*Write the question number clearly if you are using an extra sheet.*

*No papers may be removed from the examination room by the candidate.*

*Dictionaries may **not** be used in this part of the examination.*

**Question 1** (24 marks)

a) Pyth yw hemma?



.....  
.....

b) Yw hemma kador?



.....  
.....

c) Py lies bleujenn eus omma?



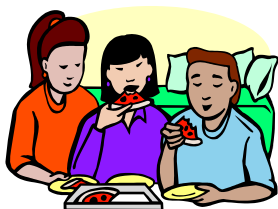
.....  
.....

d) Pyth usi ev ow kul?



.....  
.....

e) Esons i ow tybri?



.....  
.....

f) Py liw yw an karr ma?



.....  
.....

g) Fatell yw an gewer?



.....  
.....

h) Py eur yw hi?



.....  
.....

**Question 2** (5 marks) Find the word which does not fit with the others

- a) eth, seytek, nownsek, gwynsek, hwegh .....
- b) karetyseenn, mynyseenn, onyonenn, favenn, porenn .....
- c) leti, boesti, lyverva, gwerthji, garth .....
- d) dyski, pyskessa, koska, eskis, leski .....
- e) bugh, hogh, ki, lowarn, tarow .....

**Question 3** (12 marks) Answer the following questions in **Cornish**.

- a) Ple'th osta trigys? .....
- .....
- b) Eus diwros dhis? .....
- .....
- c) Yw da genes kerdhes ryb an mor? .....
- .....
- d) A wruss'ta dybri oyow an myttin ma? .....
- .....

**Question 4** (9 marks) Translate the following into **English**

- a) 'Res yw dhymm mos tre kyns pell,' yn-medh an den dh'y goweth.  
.....  
.....  
.....
- b) Yth esa lies skath vyghan y'n porth mes nyns esa gorholyon bras.  
.....  
.....  
.....

**Question 5** (5 marks) Match the Cornish places with the English meaning

- a) Baldhu (Bal du) = .....
- b) Portscatho (Porth skathow) = .....
- c) Porth Navas (Porth an Dhavas) = .....
- d) Tremough (Tre mogh) = .....
- e) Nanpean (Nans byghan) = .....

- i) harbour of boats
- ii) farmstead of pigs
- iii) black mine
- iv) little valley
- v) cove of the sheep

**Question 6** (20 marks) Read the following passage. Do **not** translate it. Answer the questions below, in complete sentences, in **Cornish**.

Dy'goelyow skol o. Yth esa an vamm ha'n tas yn kegin aga chi, owth eva te. Adhesempis, yth esa habadoellya euthyk yn lowarth an teylu. Yth esa an tri flogh ow kwari hag ena ow karma.

"Yma Davydh orth ow skwattya!" yn-medh Jago. Davydh a wrug poenya dh'y vamm. "An karr byghan ha rudh yw ow harr ow honan," yn-medh ev; pur drist ha serrys o ev.

"My ow honan, my a wrug y brena orth an fer nans yw tri mis. Lemmyn, terrys yw."

"Pandr'a hwer lemmyn?" a wrug krodhvolas aga thas.

"Ott! Jago a wrug stankya war ow harr. Terrys yw ev."

"Ny wrug ev stankya warnodho," yn-medh Sara. "An karr a wrug koedha dhe'n dor. My a wrug y weles."

"Fleghes, fleghes, henn yw lowr. Hwi a wra skrija kepar ha mebyon an pla. Davydh, my a wra prena karr nowydh ragos a-vorow myttin a-varr. Lemmyn, taw taves."

a) Yth esa an vamm ha'n tas y'n chi; yn py stevell esens i? .....  
 .....(2 marks)

b) Py lies flogh esa y'n lowarth? .....  
 .....(2 marks)

c) Fatell o karr Davydh? .....  
 .....(4 marks)

d) Davydh a wrug prena karr byghan. Ple ha p'eur? .....  
 .....(4 marks)

e) A wrug Jago stankya war garr Davydh? Piw a wrug gweles? .....  
 .....(4 marks)

f) Y vamm a vynn gul neppyth rag Davydh. Pyth? P'eur? .....  
 .....(4 marks)

**Question 7** (25 marks) Write 50 – 100 words in **Cornish** on **one** of the following topics

a) Gwenton  
(Spring)

b) Kerdh ryb an avon  
(A walk by the river)

c) Ow theylu  
(My family).

.....

.....

.....

.....

.....

.....

.....

.....

**Paper 1/wa**

**Role Play** (30 marks)

# examiner's copy

The following appears on the candidate's copy:

**Do not write on this card.**

**This card may not be removed from the examination room.**

You have 10 minutes to prepare the two role-plays. You may use a dictionary in the preparation of these role-plays. You are not allowed help from any source other than the dictionary. You may make notes on the paper provided. You may **not** use the dictionary in the examination room but you may make use of your notes.

Each role-play is worth 15 marks.

**Do not write on this card.**

**This card may not be removed from the examination room.**

# examiner's copy

## Role-play 1

Your car engine is making a funny noise, so you take it to the garage. The examiner will play the part of the mechanic and will speak first.

- You say you have a problem with your car; there is a funny noise coming from the engine.  
*The mechanic will ask you what kind of noise.*
- You reply that it is like someone knocking.  
*The mechanic asks you when you hear the noise; whether it is always there or not.*
- You reply that the noise is always there but you hear it more in hot weather.  
*The mechanic tells you that you will have to leave the car at the garage; he asks you for your phone number.*
- You give your home number and mobile.  
*The mechanic says they will phone you later.*
- You tell the mechanic you will be at work till 4.30 ...and end the conversation appropriately.

## Role-play 2

You are at the airport to get the plane to Glasgow. The examiner will play the part of the check-in clerk and will speak first.

- You say that you are travelling to Glasgow.  
*The check-in clerk asks for your passport and ticket.*
- You hand over your passport but say that you do not have a ticket because you booked online.  
*The clerk asks if you have anything sharp in your hand luggage.*
- You reply that you do not. You put your sword in your large bag.  
*The clerk asks if you packed your bags yourself.*
- You reply that you did.  
*The clerk asks you to put your large bag on the belt; it is too heavy, so you will have to pay extra.*
- You ask how much it will cost and how you can pay.  
*The clerk tells you it will be £50 and you can pay by card.*
- You accept, pay by card ... and end the conversation appropriately.

1/

- Apposyer: Myttin da. A allav vy dha weres?  
Ombrofyer: .....  
Apposyer: A yll'ta leverel dhymm py par tros, mar pleg?  
Ombrofyer: .....  
Apposyer: A wre'ta klewes an tros pup-prys? Pup-prys po na?  
Ombrofyer: .....  
Apposyer: Da lowr. Res yw dhis gasa an karr omma. Pyth yw dha niver pellgowser?  
Ombrofyer: .....  
Apposyer: Meur ras. Ni a wra pellgewsel dhis diwettha.  
Ombrofyer: .....

2/

- Apposyer: Dydh da. Ple hwre'ta vyajya hedhyw?  
Ombrofyer: .....  
Apposyer: A allav vy kavoes dha dremengummyas ha dha dokyn, mar pleg?  
Ombrofyer: .....  
Apposyer: Eus neppyth lymm yn dha fardellow dorn?  
Ombrofyer: .....  
Apposyer: A wruss'ta troessa dha seghyer dha honan?  
Ombrofyer: .....  
Apposyer: Gwra gorra dha sagh bras war an grugys, mar pleg. Drog yw genev, re boes yw. Res yw dhis tyli moy.  
Ombrofyer: .....  
Apposyer: Hanterkans peuns ha ty a yll tyli gans kartenn.  
Ombrofyer: .....

**Paper 1/wa**

**Role Play** (30 marks)

Candidate's Copy

**Do not write on this card.**

**This card may not be removed from the examination room.**

You have 10 minutes to prepare the two role-plays. You may use a dictionary in the preparation of these role-plays. You are not allowed help from any source other than the dictionary. You may make notes on the paper provided. You may **not** use the dictionary in the examination room but you may make use of your notes.

Each role-play is worth 15 marks.

**Do not write on this card.**

**This card may not be removed from the examination room.**

## Role-play 1

Your car engine is making a funny noise, so you take it to the garage. The examiner will play the part of the mechanic and will speak first.

- You say you have a problem with your car; there is a funny noise coming from the engine.  
*The mechanic will ask you what kind of noise.*
- You reply that it is like someone knocking.  
*The mechanic asks you when you hear the noise; whether it is always there or not.*
- You reply that the noise is always there but you hear it more in hot weather.  
*The mechanic tells you that you will have to leave the car at the garage; he asks you for your phone number*
- You give your home number and mobile.  
*The mechanic says they will phone you later*
- You tell the mechanic you will be at work till 4.30...and end the conversation appropriately.

## Role-play 2

You are at the airport to get the plane to Glasgow. The examiner will play the part of the check-in clerk and will speak first.

- You say that you are travelling to Glasgow.  
*The check-in clerk asks for your passport and ticket.*
- You hand over your passport but say that you do not have a ticket because you booked online.  
*The clerk asks if you have anything sharp in your hand luggage.*
- You reply that you do not because you packed your sword in your large bag.  
*The clerk asks if you packed your bags yourself.*
- You reply that you did.  
*The clerk asks you to put your large bag on the belt; it is too heavy, so you will have to pay extra.*
- You ask how much it will cost and how you can pay.  
*The clerk tells you it will be £50 and you can pay by card.*
- You accept, pay by card....and end the conversation appropriately.



**Paper 1/wa**

**Listening** (20 marks)

# examiner's copy

The following appears on the front of the candidate's copy:

*Complete the box above.*

*Do not turn this question paper over until instructed to do so.*

Answer all questions in the spaces provided in this booklet.

*Write in blue or black ink.*

*Maximum possible marks for each question are given in brackets.*

*Take care to write clearly but complete sentences are **not** required.*

*Extra paper is available on request.*

*Write your name on any extra sheet(s) of paper you use.*

*Write the question number clearly if you are using an extra sheet.*

*No papers may be removed from the examination room by the candidate.*

*Dictionaries may **not** be used in the listening part of the examination.*

*Listen carefully to the instructions that you will hear.*

# examiner's copy

Transcript

*Open your answer paper. You now have one minute to read the questions.*

The passage will be read three times with a short pause before each of the readings. You may answer the questions at any time during the readings.

You are on the platform at Truro Station waiting for your train. There are two announcements on the loudspeaker system.

Dohajydh da. Ottomma kedhlow rag oll tremenysi a vynn mos dhe Aberplymm, Karesk ha Loundres. Soweth, yma problem gans an tren; hwath yn Pennsans yma ev. Dell waytyn, an tren ma a wra drehedhes Truru dhe bymp eur ha hanter ha ny wra ev drehedhes Loundres bys dhe hanter wosa deg eur haneth. Yma te ha koffi rag pubonan war an kay niver dew.

Goslowewgh, goslowewgh, mar pleg. Ottomma messaj rag Mester Wella Hoskin. Res yw dhis dos dhe'n dokynva; yma galow pellgowser ragos dhiworth Sarah Davey yn dha soedhva. Yma dha sagh ha'n ober rag Loundres war dha dhesk hwath, dell hevel. Mar nyns yw possybyl dos dhe'n dokynva, gwra pellgewsyl dhedhi, mar pleg. Hy niver yw 01872 363294.

End of first reading.

.....

End of second reading.

.....

*End of third reading. You now have two minutes to finalise your answers.*

.....

*Now stop writing.*

-----

*The following questions appear on the candidate's paper:*

Answer in **English**.

1. What time of day is it? [1]
2. The information is for passengers travelling to which destinations? [3]
3. What is the problem? [2]
4. At what time will the train get to Truro and then arrive in London? [4]
5. What is available on platform 2? [2]
6. For whom is the second message? [1]
7. Where must he go? [2]
8. Who is calling him and from where? [3]
9. What has he done? [2]
10. What is the Truro number he must call? 01872 ..... [2]

**Paper 1/wa**

**Listening** (20 marks)

Name (print).....
Candidate number .....
Signature .....

*Complete the box above.*

*Do not turn this question paper over until instructed to do so.*

*Answer all questions in the spaces provided in this booklet.*

*Write in blue or black ink.*

*Maximum possible marks for each question are given in brackets.*

*Take care to write clearly but complete sentences are **not** required.*

*Extra paper is available on request.*

*Write your name on any extra sheet(s) of paper you use.*

*Write the question number clearly if you are using an extra sheet.*

*No papers may be removed from the examination room by the candidate.*

*Dictionaries may **not** be used in the listening part of the examination.*

*Listen carefully to the instructions that you will hear.*

The passage will be read three times with a short pause before each of the readings. You may answer the questions at any time during the readings.

Answer in **English**.

1) What time of day is it? [1]

.....

2) The information is for passengers travelling to which destinations? [3]

.....

3) What is the problem? [2]

.....

4) At what time will the train get to Truro and then arrive in London? [4]

.....

5) What is available on platform 2? [2]

.....

6) For whom is the second message? [1]

.....

7) Where must he go? [2]

.....

8) Who is calling him and from where? [3]

.....

9) What has he done? [2]

.....

10) What is the Truro number he must call? 01872 ..... [2]

.....

**Paper 1/wa**

**Speaking - unprepared** (30 marks)

# examiner's copy

*(there is no candidate copy for this part of the examination.)*

- 1 Piw osta?/Pyth yw dha hanow?
- 2 Ple'th osta trigys? Ple'ma ....?
- 3 Fatell yw an gewer hedhyw? Yw an gewer sygh/glyb ... yn Gwav?
- 4 Py eur yw hi? Dhe by eur y hwre'ta sevel y'n myttin?
- 5 Py liw yw an bluvenn/lyver/folenn..? Yw an liw da genes?
- 6 Py par chi/karr .. eus dhis? Yw ev/hi koth/nowydh/bras/byghan/...?
- 7 Eus fleghes/enevales dhis? Py lies flogh/eneval eus dhis?
- 8 Yw da genes kana/donsya/kerdhes? Osta esel a neb bagas kana/donsya/kerdhes?
- 9 A wruss'ta mos dhe Gembra/Borthia/Vreten Vyghan/...? Pyth eus ena?
- 10 Py mis yw an mis ma? Py mis yw dha bennbloedh/pennbloedh dha vamm/dha das/...?

**Speaking - Prepared** (20 marks)

The candidate will be prepared to discuss *[Ow thas]* or *[Vyaj dhe'n pow]*. These topics will have been set at least three weeks before the examination. The candidate is to be allowed to start talking and the examiner will then interrupt and ask the candidate some simple questions about the topic which should include at least one request to repeat something and at least one request to elaborate on something.

**Paper 1/wa  
Mark Scheme**

**Role-play 1 (15 marks) Ignore incorrect or missing mutations.**

Myttin da / Dydh da	1
Yma problem/kaletter/kudynn ... ow harr	2
Yma tros koynt yn/dhiworth an jynn	4
Kepar ha ...	2
nebonan	1
ow knoukya	2
My a glew / a wra klewes	2
pup-prys	1
moy	1
yn kewer doemm	2
Ow niver pellgowser	2
Klapkodh / kellgowser / pellgowsell / fon gwaya	1
2 numbers given	2
Yth esov owth oberi / my a wra oberi / my a ober	2
bys (dhe)	1
hanter wosa peder / peder eur ha hanter .. h.e.	2
Meur ras / Duw genes .. h.e.	1
<i>Maximum marks *</i>	<b>29</b>

**Role-play 2 (15 marks)**

Dydh da	1
My a wra/vynn mos/vyajya / yth esov vy ow ...	2
Tremengummyas	1
Nyns eus tokyn dhymm	2
My a wrug erghi/ my a erghis	2
warlinenn	1
Nag eus/nyns eus ...	2
My a wrug gorra / a worras	2
kledha	1
sagh/trog bras	2
Gwrug	1
Pygemmys / pyth yw an kost / py kost	2
Fatell	1
a allav (vy) tyli / pe	2
Da lowr / henn yw da	1
Ottomma ow hartenn gresys	2
Meur ras	1
<i>Maximum marks *</i>	<b>26</b>

***\*please send RAW marks to the examination board***

Paper 1/wa

# examiner's copy

## Mark Scheme

### Speaking 1 (30 marks)

There are 10 questions. Invigilators may change the questions, but the new question should be of an equivalent level of difficulty.

Question 1 is the confidence giving question, all candidates should get 3 marks.

The other questions each have a supplementary question, the first part gains 2 marks for a correct understandable answer, regardless of whether it is a complete sentence (this is conversation), one word answers may gain 1 mark. The remaining 1 mark is for an understandable answer to the supplementary question.

Ignore incorrect or missing mutations.

### Speaking 2 (20 marks)

Introductory remarks (the first 3 or 4 sentences)

Relevant and correct 5 - 6 marks

Relevant but some errors 3 - 4 marks

Mostly relevant, many errors 1 - 2 marks

Response to discussion

Fluent, obvious understanding, few errors 11 - 14 marks

Quick to respond, understanding good, some errors 7 - 10

Responds when prompted 4 - 6

Usually one word answers only, understanding poor < 4

Paper 1/wa

# examiner's copy

## Mark Scheme

Apposyans war anow

Listening (20 marks)

1	Afternoon	1
2	Plymouth, Exeter and London	3
3	There is a problem with the train It is still in Penzance	1 1
4	Half past five Half past ten tonight	1 1
5	Tea and coffee for everyone	2
6	Mr Wella Hoskin	1
7	To the ticket office	2
8	Sarah Davey His office	1 1
9	Left his bag with his work for London on his desk	1 2
10	(01872) 363294	2
	<i>Maximum marks</i>	<b>20</b>



Mark Scheme

# examiner's copy

**Ignore all incorrect mutations**

1a	Hemm/homm yw moes/Moes yw hemma/homma/Moes yw moes <i>or</i> yw	1	3
1b	Nag yw, kath yw <i>or</i> Nag yw, nyns yw kador Nag yw <i>or</i> nyns yw	1	3
1c	Yma naw (bleujenn omma) Yma <i>or</i> naw	1	3
1d	Yma ev ow skrifa Yma ev ow + <i>different verb</i>	2	3
1e	(Esons), ymons i ow tybri esons/ymons	1	3
1f	An karr yw gwynnrudh/rudhwynn/Gwynnrudh/rudhwynn yw an karr <i>any other colour</i> + yw	1	3
1g	Gwynsek / kommolek yw hi/an gewer Gwynsek/kommolek/drog/garow	1	3
1h	Dewdhek (eur) / hanter-dydh / hanter-nos yw (hi) 12 (eur) yw (hi)	1	3
	<i>Maximum marks</i>		<b>24</b>
2a	gwynsek		1
2b	mynysenn		1
2c	garth		1
2d	eskis		1
2e	bugh		1
	<i>Maximum marks</i>		<b>5</b>
3a	Ow hanow yw .../ ... yw ow hanow / ...		3
3b	Eus, yma diwros dhymm } <i>either answer for</i> Nag eus, nyns eus diwros dhymm } <i>full marks</i> Eus/nag eus/yma dhymm		1 1
3c	(Yw), da yw genev kerdhes ryb an mor } <i>either answer</i> (Nag yw), nyns yw da genev kerdhes ... } <i>for full marks</i> genev		3 1
3d	(Gwrug) my a wrug ... } <i>either answer for</i> (Na wrug) ny wrug (vy) ... } <i>full marks</i> Gwrug / my a wrug /na wrug / ny wrug		3 1
	<i>Maximum marks</i>		<b>12</b>

4a	I must/have to Go home soon Says/Said the man to his friend <i>at least 3 words correctly recognised</i>	1 1 1 1 1
4b	There were Many/lots of small boats in the harbour But there were not (any) big/large boats/ships <i>at least 3 words correctly recognised</i>	1 2 1 1 1
	<i>Maximum marks</i>	<b>9</b>
5a	iii (black mine)	1
5b	i (harbour of boats)	1
5c	v (cove of the sheep)	1
5d	ii (farmstead of pigs)	1
5e	iv (little valley)	1
	<i>Maximum marks</i>	<b>5</b>
6a	Yth esens (i) y'n gegin	1 1
6b	Yth esa tri flogh (y'n lowarth)	1 1
6c	Karr Davydh/ev o // o ev/o karr Davydh byghan rudh terrys	1 1 1 1
6d	Davydh/ev a wrug prena orth an fer nans yw tri mis	1 1 2
6e	Na wrug Ny wrug Jago/ev stankya Sara a wrug gweles/y weles	1 1 2
6f	Hi/Mamm Davydh a wra prena karr nowydh a-vorow myttin a-varr	2 1 1
	<i>Maximum marks</i>	<b>20</b>
7	Excellent Very good Good Satisfactory Fair Poor <i>Marks will be awarded for suitable, appropriate content, correct length <math>\pm</math> 20%, a range of expressions, correct word order and use of verbs.</i>	22 – 25 19 – 21 16 – 18 13 – 15 10 - 12 < 10
	<i>Maximum marks</i>	<b>25</b>